


64bit Driver Installation Guide

1. Copy the files in the CD to desktop.

2. Visit <http://www.ngohq.com/home.php?page=dseo> to download this program.

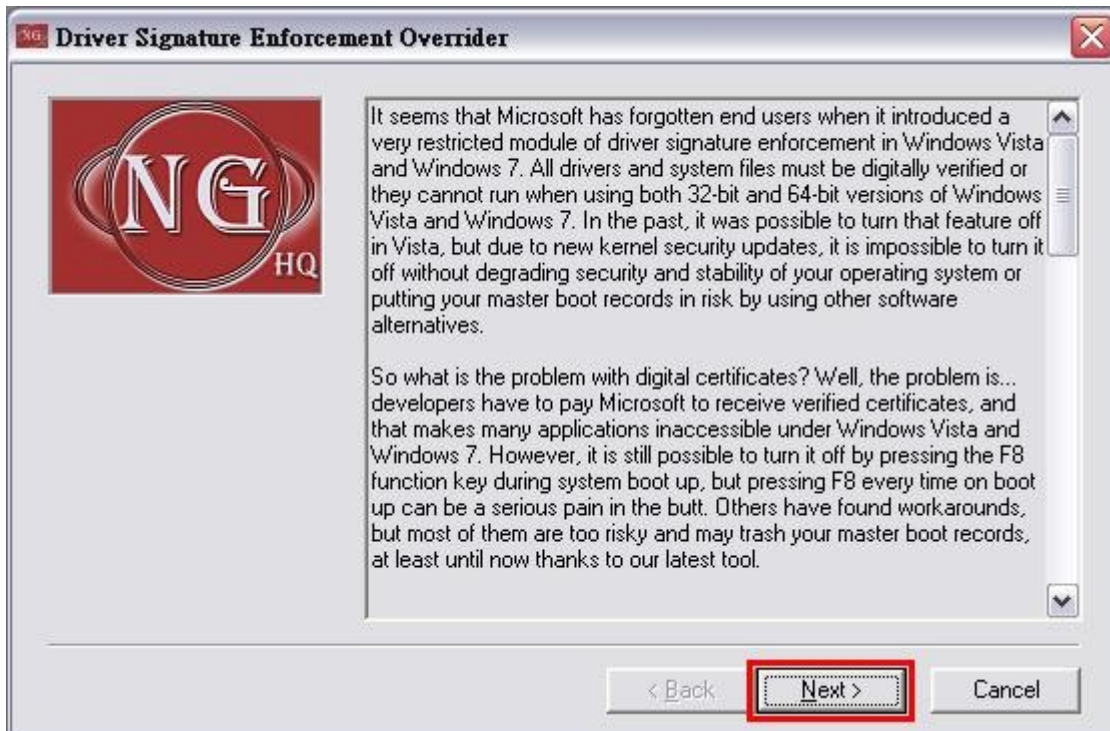
** In case the above link is dead, please simply search “Driver Signature Enforcement Overrider” by Google. **

The Program is still included in the downloaded driver package. See folder “64bit_Driver”.

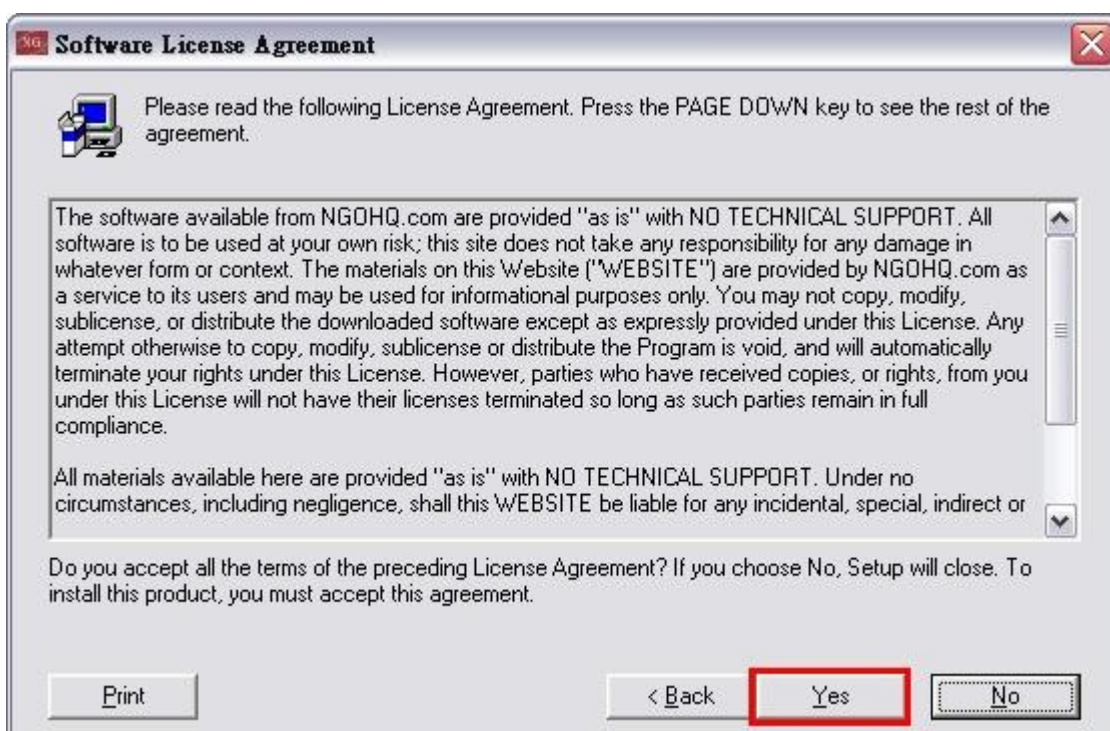
3. Double click  dseo13b.exe to run the program.

** Note: User Account Control (UAC) must be disabled in-order to use this tool.**

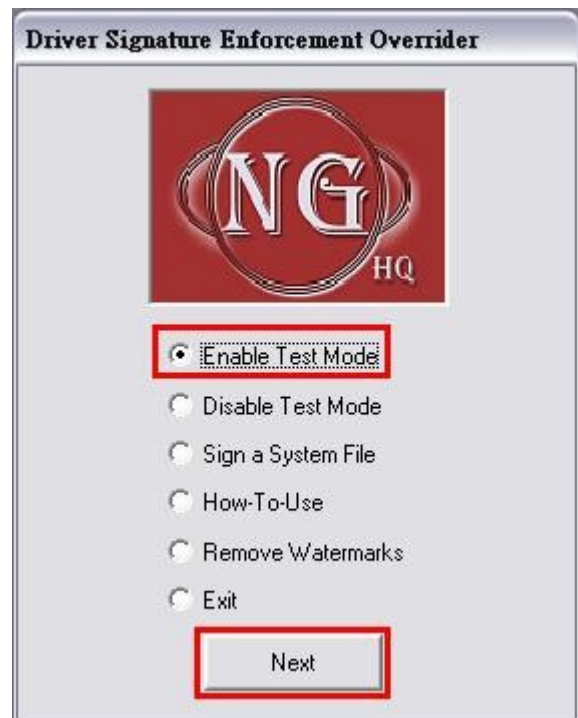
4. Click “Next”.



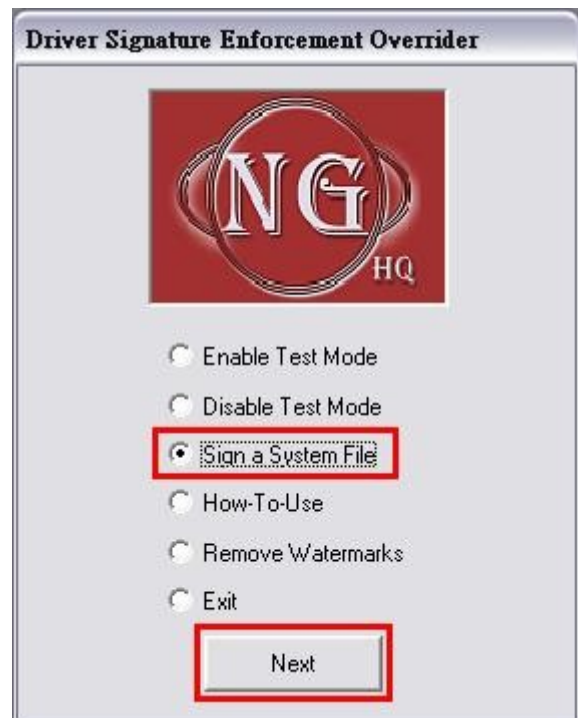
5. Click “yes”.



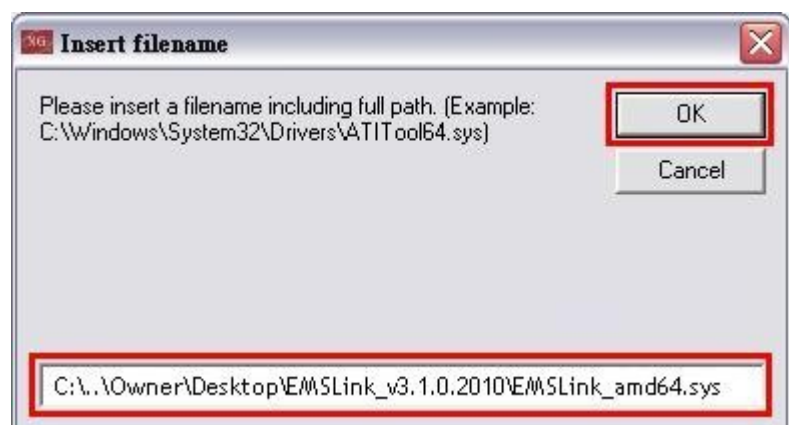
6. Select “Enable Test Mode”, and click “Next”.



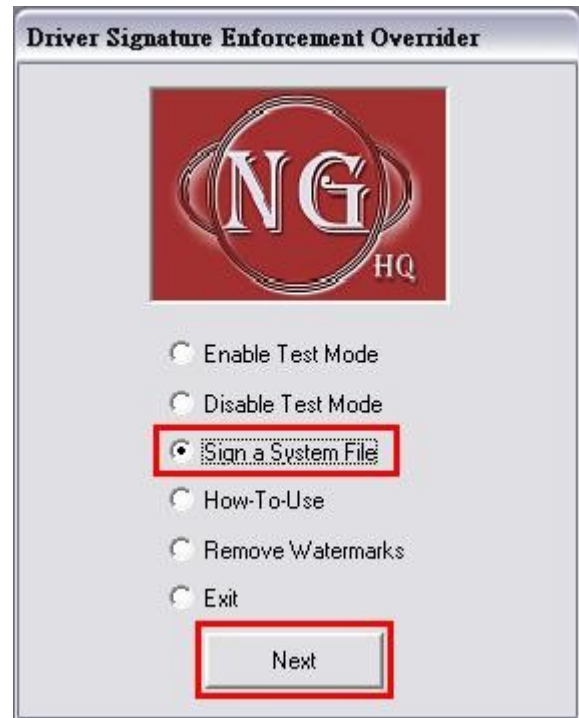
7. Select “Sign a System File”, and click “Next”.



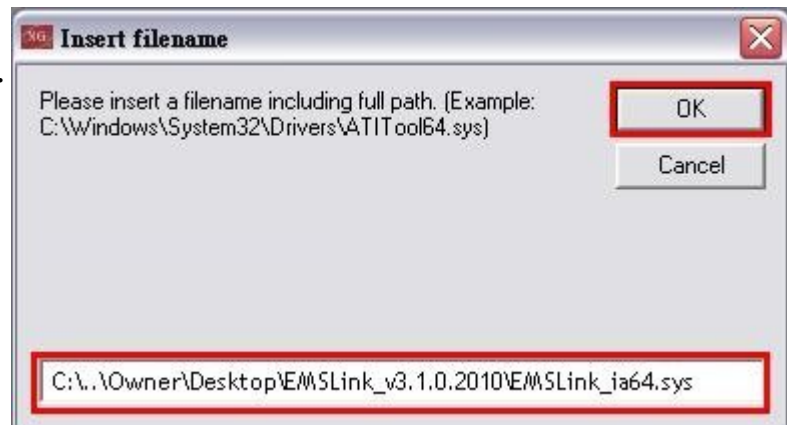
8. Enter the location of the file “EMSLink_amd64.sys”, and click “OK”.



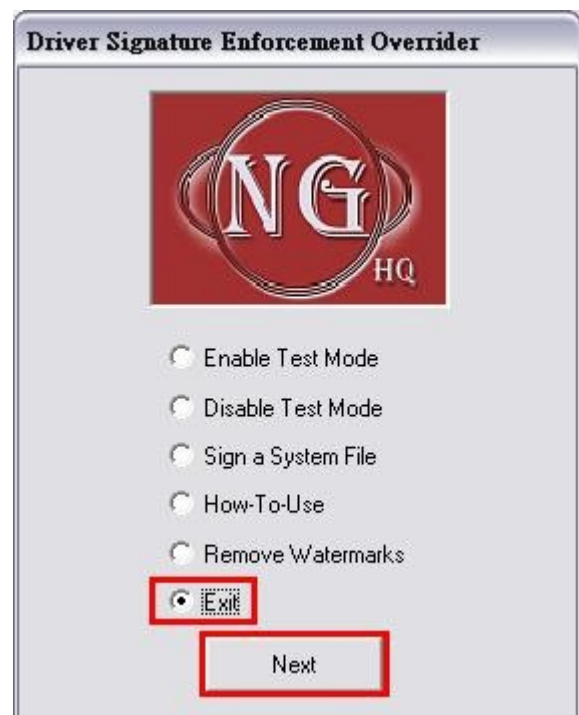
9. Select “Sign a System File”, and click “Next”.



10. Enter the location of the file “EMSLink_ia64.sys”, and click “OK”.



11. Select “Exit” and click “Next” to exit the program.



12. Reboot your PC.

13. Plug the GB USB smart card to PC, and install the driver as usual.
(i.e. direct the installer to the location of EMSLink_ia64.sys and EMSLink_amd64.sys)